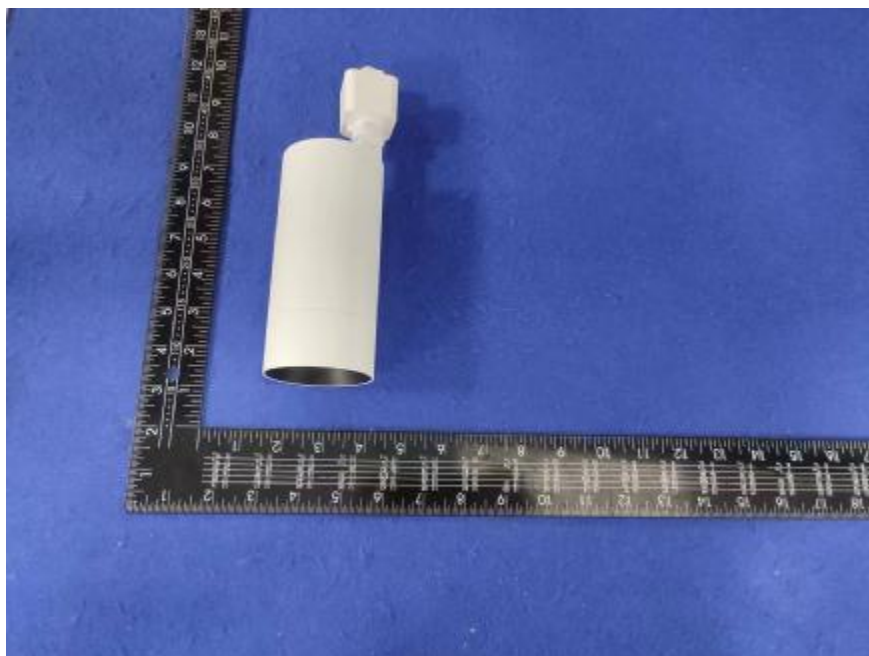


Luminaire Photograph



Light Output Ratio:	87.4%	
Luminaire Power:	13.48 W	
SHR Nominal:	0.50	Calculated using the TM5
SHR Maximum:	0.65	fine grid method.

C Range: 0 - 360DEG
C Interval: 30.0DEG
Test Speed: HIGH
Temperature: 25.3 °C
Operators: zoe
Test Date: 2023-6-5

γ Range: 0 - 180DEG
 γ Interval: 1.0DEG
Test System: EVERFINE GO-SPEX500_V1 SYSTEM V2.00.461
Humidity: 65.0%
Test Distance: 3.160m [K=1.0000]
Remarks: LAMP: BXRE-30H1000-A-83 Ra: 97
LENS: PM-0132B 36R
DRIVER: RISE DRIVER 350mA
30minutes warm-up

LUMINOUS INTENSITY DISTRIBUTION DIAGRAM

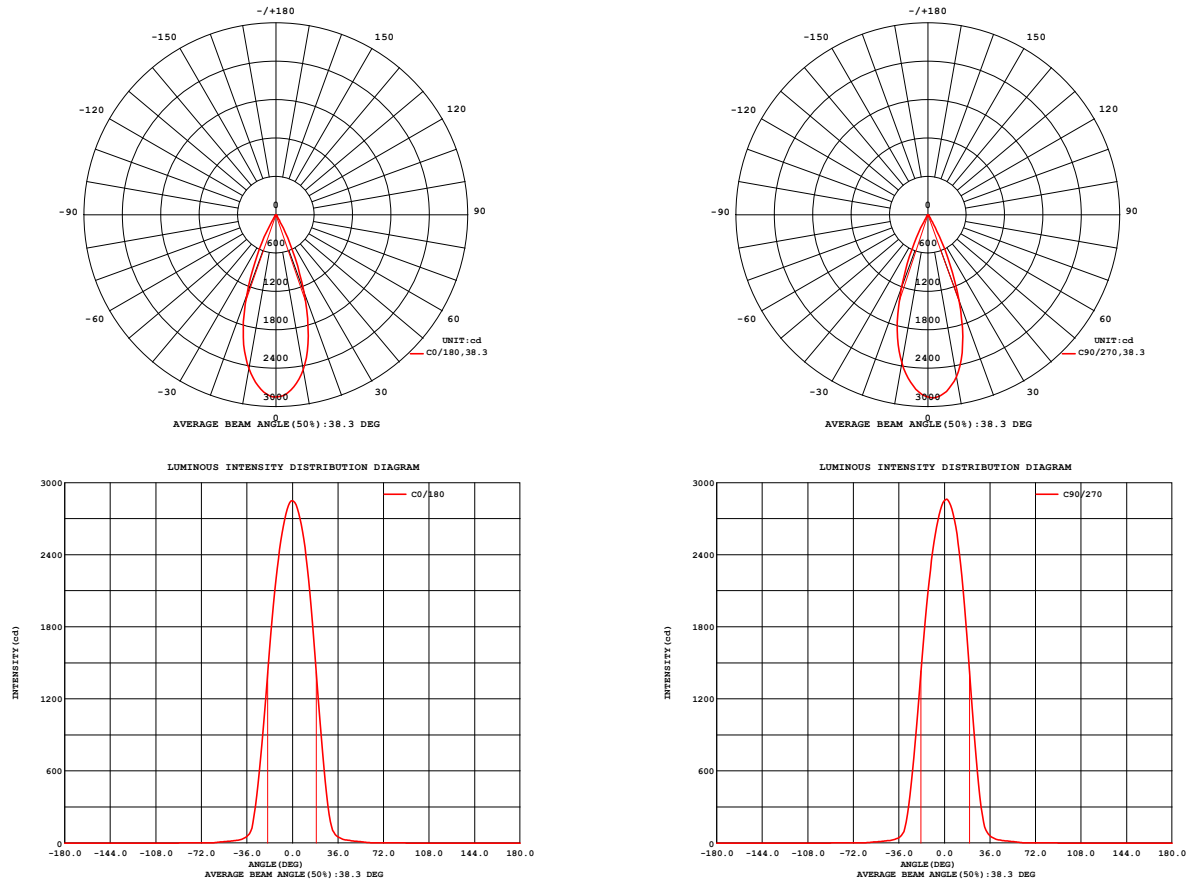


Fig. C0/C180

Fig. C90/C270

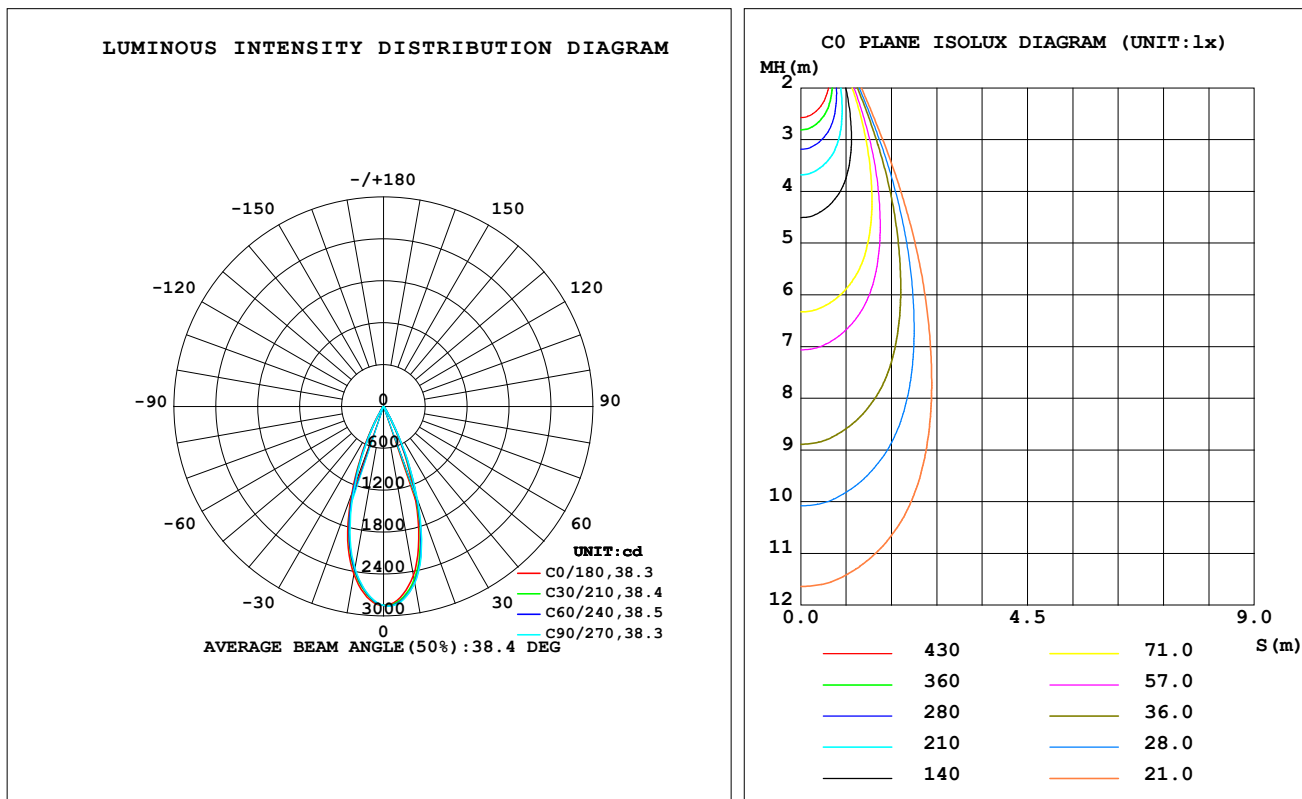
C Range: 0 - 360DEG
C Interval: 30.0DEG
Test Speed: HIGH
Temperature: 25.3 °C
Operators: zoe
Test Date: 2023-6-5

γ Range: 0 - 180DEG
γ Interval: 1.0DEG
Test System: EVERFINE GO-SPEX500_V1 SYSTEM V2.00.461
Humidity: 65.0%
Test Distance: 3.160m [K=1.0000]
Remarks: LAMP: BXRE-30H1000-A-83 Ra: 97
LENS: PM-0132B 36R
DRIVER: RISE DRIVER 350mA
30minutes warm-up

LUMINAIRE PHOTOMETRIC TEST REPORT

Test:U:120.22V I:0.1137A P:13.476W PF:0.9842 Freq:59.98Hz Lamp Flux:1339.9x1 lm		
NAME: 2319.201-H3AM-350	TYPE:	WEIGHT:
SPEC.: 3000K	DIM.:	SERIAL No.: 2306050739
MFR.: RISE	SUR.: 0.002826m2	Shielding Angle:

DATA OF LAMP		PHOTOMETRIC DATA Eff: 86.85 lm/W			
MODEL	Brideglux	I _{max} (cd)	2862	S/MH(C0/180)	0.61
NOMINAL POWER(W)	13	LOR(%)	87.4	S/MH(C90/270)	0.59
RATED VOLTAGE(V)	120	TOTAL FLUX(lm)	1170.5	η UP,DN(C0-180)	0.0,45.4
NOMINAL FLUX(lm)	1339.9	CIE CLASS	DIRECT	η UP,DN(C180-360)	0.0,41.9
LAMPS INSIDE	1	η up(%)	0.0	CIBSE SHR NOM	0.50
TEST VOLTAGE(V)	120	η down(%)	87.4	CIBSE SHR MAX	0.65



C Range: 0 - 360DEG
C Interval: 30.0DEG
Test Speed: HIGH
Temperature:25.3℃
Operators:zoe
Test Date:2023-6-5

γ Range: 0 - 180DEG
γ Interval: 1.0DEG
Test System:EVERFINE GO-SPEX500_V1 SYSTEM V2.00.461
Humidity:65.0%
Test Distance:3.160m [K=1.0000]
Remarks: LAMP:BXRE-30H1000-A-83 Ra:97
LENS:PM-0132B 36R
DRIVER: RISE DRIVER 350mA
30minutes warm-up

ZONAL FLUX DIAGRAM

ZONAL FLUX DIAGRAM:

γ	C0	C45	C90	C135	C180	C225	C270	C315	γ	Φ zone	Φ total	%lum,lamp
10	2458	2541	2570	2530	2442	2384	2355	2391	0- 10	252.9	252.9	21.6,18.9
20	1273	1373	1421	1418	1338	1271	1216	1217	10- 20	535.0	787.9	67.3,58.8
30	177.0	209.4	235.4	243.5	238.3	204.9	174.4	166.9	20- 30	307.4	1095	93.6,81.7
40	31.87	35.49	35.94	35.16	31.58	28.72	27.35	29.15	30- 40	48.22	1144	97.7,85.3
50	14.80	15.98	16.02	15.79	14.59	13.49	12.92	13.53	40- 50	16.48	1160	99.1,86.6
60	3.558	3.954	4.247	4.544	4.279	3.841	3.374	3.271	50- 60	8.716	1169	99.9,87.2
70	0.6236	0.6487	0.6883	0.7182	0.6881	0.6403	0.6132	0.5961	60- 70	1.484	1170	100,87.3
80	0.0279	0.0149	0.0245	0.0174	0.0276	0.0163	0.0263	0.0138	70- 80	0.2438	1170	100,87.4
90	0	0	0	0	0	0	0	0	80- 90	0.0155	1170	100,87.4
100	0	0	0	0	0	0	0	0	90-100	0	1170	100,87.4
110	0	0	0	0	0	0	0	0	100-110	0	1170	100,87.4
120	0	0	0	0	0	0	0	0	110-120	0	1170	100,87.4
130	0	0	0	0	0	0	0	0	120-130	0	1170	100,87.4
140	0	0	0	0	0	0	0	0	130-140	0	1170	100,87.4
150	0	0	0	0	0	0	0	0	140-150	0	1170	100,87.4
160	0	0	0	0	0	0	0	0	150-160	0	1170	100,87.4
170	0	0	0	0	0	0	0	0	160-170	0	1170	100,87.4
180	0	0	0	0	0	0	0	0	170-180	0	1170	100,87.4
DEG	LUMINOUS INTENSITY:cd									UNIT:lm		

C Range: 0 - 360DEG
C Interval: 30.0DEG
Test Speed: HIGH
Temperature:25.3℃
Operators:zoe
Test Date:2023-6-5

γ Range: 0 - 180DEG
 γ Interval: 1.0DEG
Test System:EVERFINE GO-SPEX500_V1 SYSTEM V2.00.461
Humidity:65.0%
Test Distance:3.160m [K=1.0000]
Remarks: LAMP:BXRE-30H1000-A-83 Ra:97
LENS:PM-0132B 36R
DRIVER: RISE DRIVER 350mA
30minutes warm-up

LUMINANCE LIMITATION CURVES

Test:U:120.22V I:0.1137A P:13.476W PF:0.9842 Freq:59.98Hz
Lamp Flux:1339.9x1 lm

NAME: 2319.201-H3AM-350

TYPE:

WEIGHT:

SPEC.: 3000K

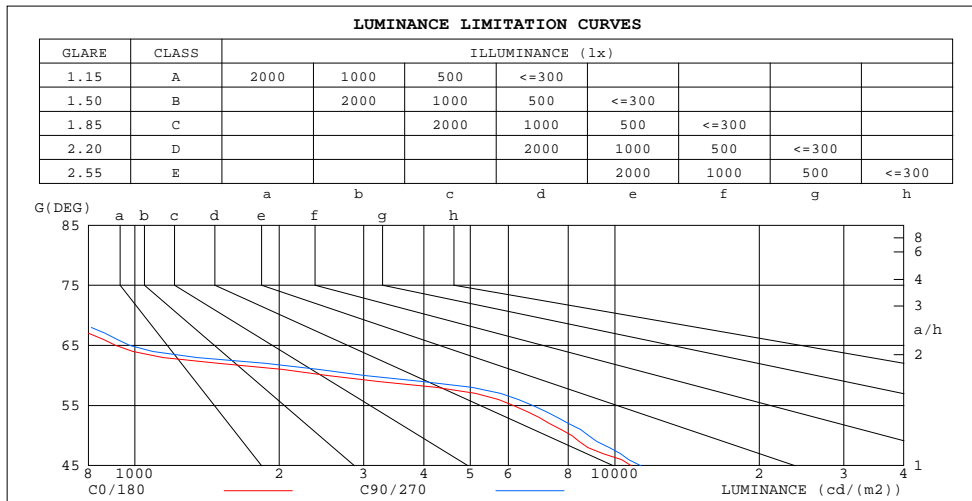
DIM.:

SERIAL No.: 2306050739

MFR.: RISE

SUR.: 0.002826m2

Shielding Angle:



LUMINANCE cd/(m2)		
G(180)	C0/180	C90/270
85	91	88
80	57	50
75	129	198
70	645	712
65	912	976
60	2515	3007
55	6149	6755
50	8142	8825
45	10829	11325

C Range: 0 - 360DEG
C Interval: 30.0DEG
Test Speed: HIGH
Temperature:25.3℃
Operators:zoe
Test Date:2023-6-5

γ Range: 0 - 180DEG
γ Interval: 1.0DEG
Test System:EVERFINE GO-SPEX500_V1 SYSTEM V2.00.461
Humidity:65.0%
Test Distance:3.160m [K=1.0000]
Remarks: LAMP:BXRE-30H1000-A-83 Ra:97
LENS:PM-0132B 36R
DRIVER: RISE DRIVER 350mA
30minutes warm-up

CU AND LUMINAIRE BUDGETARY ESTIMATE DIAGRAM

Test:U:120.22V I:0.1137A P:13.476W PF:0.9842 Freq:59.98Hz
Lamp Flux:1339.9x1 lm

NAME: 2319.201-H3AM-350

TYPE:

WEIGHT:

SPEC.: 3000K

DIM.:

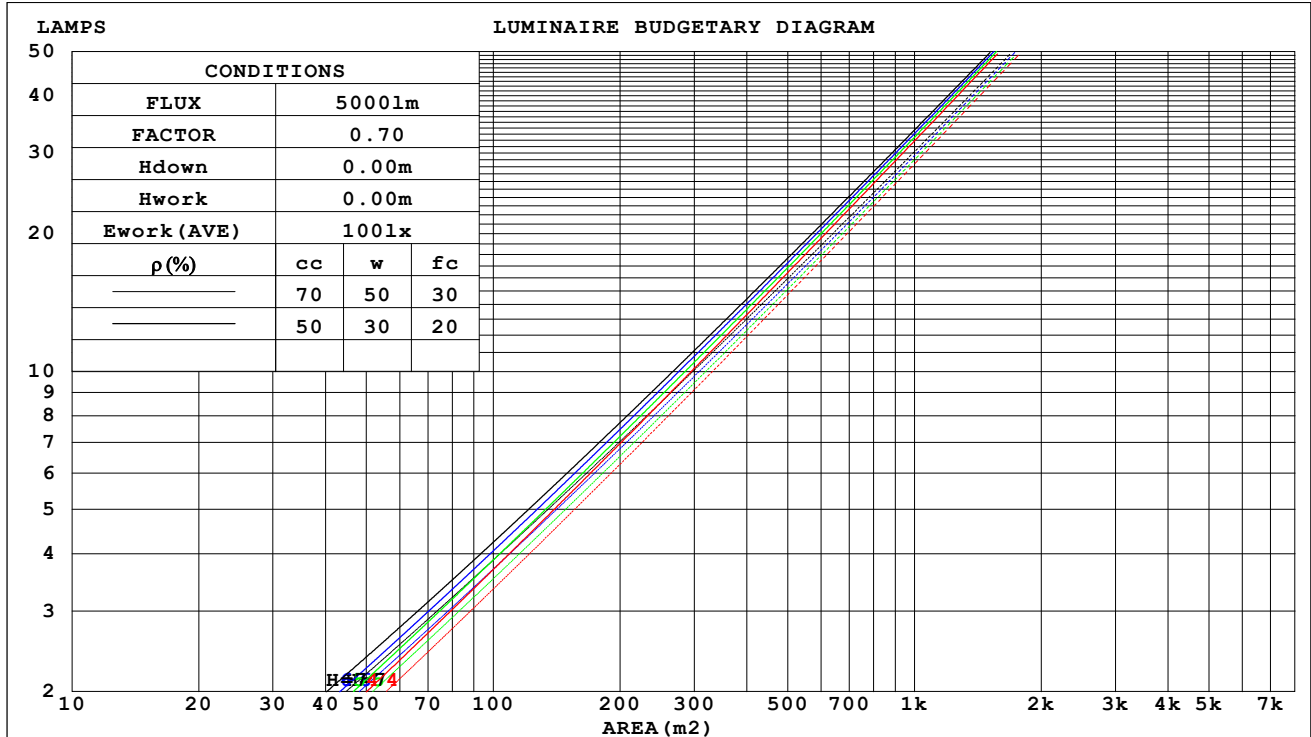
SERIAL No.: 2306050739

MFR.: RISE

SUR.: 0.002826m2

Shielding Angle:

ρ_{cc}	80%			70%			50%			30%			10%			0
ρ_w	50%	30%	10%	50%	30%	10%	50%	30%	10%	50%	30%	10%	50%	30%	10%	0
ρ_{fc}	20%			20%			20%			20%			20%			0
RCR	RCR:Room Cavity Ratio															



C Range: 0 - 360DEG
C Interval: 30.0DEG
Test Speed: HIGH
Temperature:25.3℃
Operators:zoe
Test Date:2023-6-5

γ Range: 0 - 180DEG
 γ Interval: 1.0DEG
Test System:EVERFINE GO-SPEX500_V1 SYSTEM V2.00.461
Humidity:65.0%
Test Distance:3.160m [K=1.0000]
Remarks: LAMP:BXRE-30H1000-A-83 Ra:97
LENS:PM-0132B 36R
DRIVER: RISE DRIVER 350mA
30minutes warm-up

WEC AND CCEC

Test:U:120.22V I:0.1137A P:13.476W PF:0.9842 Freq:59.98Hz Lamp Flux:1339.9x1 lm		
NAME: 2319.201-H3AM-350	TYPE:	WEIGHT:
SPEC.: 3000K	DIM.:	SERIAL No.: 2306050739
MFR.: RISE	SUR.: 0.002826m2	Shielding Angle:

pcc	80%			70%			50%			30%			10%			0
ρw	50%	30%	10%	50%	30%	10%	50%	30%	10%	50%	30%	10%	50%	30%	10%	0
ρfc	20%			20%			20%			20%			20%			0
RCR	RCR:Room Cavity Ratio						Wall Exitance Coefficients (WEC)									
0.0																
1.0	.131	.074	.024	.125	.071	.023	.114	.065	.021	.104	.060	.019	.095	.055	.018	
2.0	.123	.067	.021	.118	.065	.020	.109	.060	.019	.100	.056	.018	.093	.052	.017	
3.0	.115	.061	.018	.111	.060	.018	.104	.056	.017	.097	.053	.016	.090	.050	.015	
4.0	.109	.057	.017	.105	.055	.016	.099	.053	.016	.093	.050	.015	.087	.048	.014	
5.0	.103	.053	.015	.100	.051	.015	.095	.049	.015	.090	.047	.014	.085	.045	.014	
6.0	.098	.049	.014	.096	.048	.014	.091	.047	.014	.086	.045	.013	.082	.043	.013	
7.0	.094	.046	.013	.092	.046	.013	.087	.044	.013	.083	.043	.012	.080	.041	.012	
8.0	.090	.044	.012	.088	.043	.012	.084	.042	.012	.080	.041	.012	.077	.040	.012	
9.0	.086	.042	.012	.084	.041	.012	.081	.040	.011	.078	.039	.011	.075	.038	.011	
10.0	.083	.040	.011	.081	.039	.011	.078	.038	.011	.075	.037	.011	.073	.037	.010	

pcc	80%			70%			50%			30%			10%			0
pw	50%	30%	10%	50%	30%	10%	50%	30%	10%	50%	30%	10%	50%	30%	10%	0
pfc	20%			20%			20%			20%			20%			0
RCR	RCR:Room Cavity Ratio						Ceiling Cavity Exitance Coefficients (CCEC)									
0.0	.166	.166	.166	.142	.142	.142	.097	.097	.097	.056	.056	.056	.018	.018	.018	
1.0	.148	.138	.128	.126	.118	.111	.087	.081	.076	.050	.047	.044	.016	.015	.014	
2.0	.133	.116	.102	.114	.100	.088	.078	.069	.061	.045	.040	.036	.014	.013	.012	
3.0	.120	.099	.082	.103	.085	.071	.071	.059	.050	.041	.035	.029	.013	.011	.010	
4.0	.110	.086	.067	.095	.074	.058	.065	.052	.041	.038	.030	.024	.012	.010	.008	
5.0	.102	.075	.056	.087	.065	.049	.060	.045	.034	.035	.027	.020	.011	.009	.007	
6.0	.094	.067	.047	.081	.058	.041	.056	.040	.029	.032	.024	.017	.010	.008	.006	
7.0	.088	.060	.040	.076	.052	.035	.052	.036	.025	.030	.021	.015	.010	.007	.005	
8.0	.083	.054	.034	.071	.047	.030	.049	.033	.021	.029	.019	.013	.009	.006	.004	
9.0	.078	.049	.030	.067	.043	.026	.047	.030	.018	.027	.018	.011	.009	.006	.004	
10.0	.074	.045	.026	.064	.039	.023	.044	.028	.016	.026	.016	.010	.008	.005	.003	

C Range: 0 - 360DEG
C Interval: 30.0DEG
Test Speed: HIGH
Temperature:25.3℃
Operators:zoe
Test Date:2023-6-5

γ Range: 0 - 180DEG
γ Interval: 1.0DEG
Test System:EVERFINE GO-SPEX500_V1 SYSTEM V2.00.461
Humidity:65.0%
Test Distance:3.160m [K=1.0000]
Remarks: LAMP:BXRE-30H1000-A-83 Ra:97
LENS:PM-0132B 36R
DRIVER: RISE DRIVER 350mA
30minutes warm-up

UGR(Unified Glare Rating) Table

Test:U:120.22V I:0.1137A P:13.476W PF:0.9842 Freq:59.98Hz Lamp Flux:1339.9x1 lm										
NAME: 2319.201-H3AM-350					TYPE:			WEIGHT:		
SPEC.: 3000K					DIM.:			SERIAL No.: 2306050739		
MFR.: RISE					SUR.: 0.002826m2			Shielding Angle:		
ceiling/cavity	0.7	0.7	0.5	0.5	0.3	0.7	0.7	0.5	0.5	0.3
walls	0.5	0.3	0.5	0.3	0.3	0.5	0.3	0.5	0.3	0.3
working plane	0.2	0.2	0.2	0.2	0.2	0.2	0.2	0.2	0.2	0.2
Room dimensions	Viewed crosswise					Viewed endwise				
x = 2H y = 2H	10.1	10.9	10.4	11.0	11.2	10.8	11.5	11.0	11.7	11.8
3H	10.0	10.7	10.3	10.9	11.1	10.6	11.3	10.9	11.5	11.7
4H	9.9	10.6	10.2	10.8	11.0	10.6	11.2	10.8	11.4	11.6
6H	9.8	10.5	10.1	10.7	10.9	10.5	11.1	10.8	11.3	11.6
8H	9.8	10.4	10.1	10.6	10.9	10.4	11.0	10.7	11.3	11.5
12H	9.8	10.3	10.1	10.6	10.9	10.4	11.0	10.7	11.2	11.5
4H 2H	10.0	10.7	10.3	10.9	11.1	10.6	11.3	10.9	11.5	11.7
3H	9.9	10.4	10.2	10.7	11.0	10.5	11.0	10.8	11.3	11.6
4H	9.8	10.3	10.1	10.6	10.9	10.4	10.9	10.7	11.2	11.5
6H	9.7	10.1	10.0	10.5	10.8	10.3	10.7	10.6	11.1	11.4
8H	9.6	10.0	10.0	10.4	10.8	10.2	10.7	10.6	11.0	11.4
12H	9.6	10.0	10.0	10.3	10.7	10.2	10.6	10.6	10.9	11.3
8H 4H	9.6	10.1	10.0	10.4	10.8	10.2	10.7	10.6	11.0	11.4
6H	9.5	9.9	9.9	10.3	10.7	10.1	10.5	10.5	10.9	11.3
8H	9.5	9.8	9.9	10.2	10.6	10.1	10.4	10.5	10.8	11.2
12H	9.4	9.7	9.9	10.1	10.6	10.0	10.3	10.5	10.7	11.2
12H 4H	9.6	10.0	10.0	10.3	10.7	10.2	10.6	10.6	10.9	11.3
6H	9.5	9.8	9.9	10.2	10.6	10.1	10.4	10.5	10.8	11.2
8H	9.4	9.7	9.9	10.1	10.6	10.0	10.3	10.5	10.7	11.2
Variations with the observer position at spacings(CIE Pub.117):										
S = 1.0H	+ 2.0 / - 3.6					+ 2.3 / - 3.6				
1.5H	+ 2.4 / - 1.7					+ 3.1 / - 1.6				
2.0H	+ 3.4 / -10.3					+ 3.2 / -10.8				

CIE Pub.117, 1340 lm Total Lamp Luminous Flux Correct (8log(F/F0) = 1.0)
Area: 0.002826 m2

C Range: 0 - 360DEG
C Interval: 30.0DEG
Test Speed: HIGH
Temperature:25.3℃
Operators:zoe
Test Date:2023-6-5

γ Range: 0 - 180DEG
γ Interval: 1.0DEG
Test System:EVERFINE GO-SPEX500_V1 SYSTEM V2.00.461
Humidity:65.0%
Test Distance:3.160m [K=1.0000]
Remarks: LAMP:BXRE-30H1000-A-83 Ra:97
LENS:PM-0132B 36R
DRIVER: RISE DRIVER 350mA
30minutes warm-up

UTILIZATION FACTORS TABLE

Test:U:120.22V I:0.1137A P:13.476W PF:0.9842 Freq:59.98Hz Lamp Flux:1339.9x1 lm		
NAME: 2319.201-H3AM-350	TYPE:	WEIGHT:
SPEC.: 3000K	DIM.:	SERIAL No.: 2306050739
MFR.: RISE	SUR.: 0.002826m2	Shielding Angle:

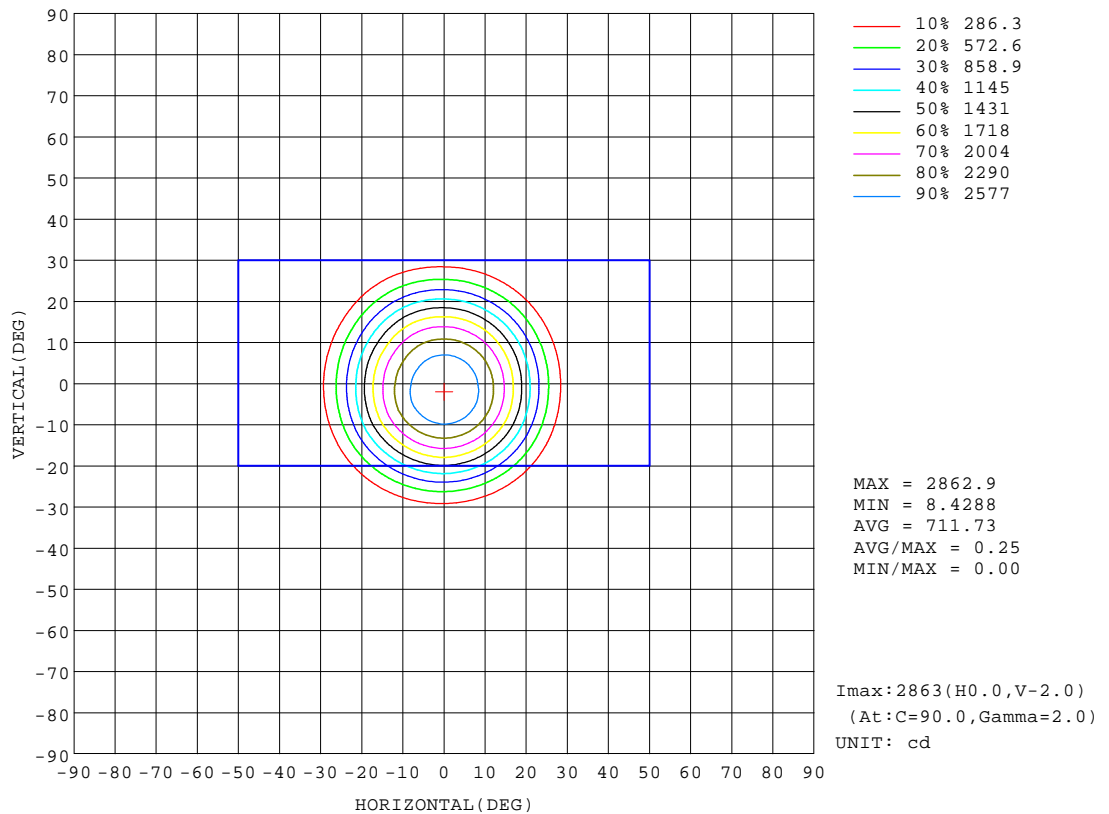
REFLECTANCE										
Ceiling	0.8	0.8	0.8	0.7	0.7	0.7	0.5	0.5	0.5	0
Walls	0.7	0.5	0.3	0.7	0.5	0.3	0.7	0.5	0.3	0
Working plane	0.2	0.2	0.2	0.2	0.2	0.2	0.2	0.2	0.2	0
ROOM INDEX	UTILIZATION FACTORS (PERCENT) $k(RI) \times RCR = 5$									
$k = 0.60$	79	74	71	78	73	70	78	73	70	67
0.80	85	80	77	84	80	77	83	79	77	74
1.00	88	84	81	88	83	81	86	83	80	77
1.25	92	87	85	91	87	84	89	86	84	80
1.50	94	90	87	93	89	87	91	88	86	82
2.00	96	92	90	94	91	89	92	90	88	83
2.50	97	94	92	96	93	91	93	91	89	84
3.00	98	96	93	97	94	92	94	92	90	85
4.00	100	98	96	98	96	95	95	94	92	86
5.00	101	99	98	99	98	96	96	95	94	87
ROOM INDEX	UF(total)									Direct
According to DIN EN 13032-2 2004			Suspended					SHRNOM = 1.25		

C Range: 0 - 360DEG
C Interval: 30.0DEG
Test Speed: HIGH
Temperature: 25.3 °C
Operators: zoe
Test Date: 2023-6-5

γ Range: 0 - 180DEG
 γ Interval: 1.0DEG
Test System: EVERFINE GO-SPEX500_V1 SYSTEM V2.00.461
Humidity: 65.0%
Test Distance: 3.160m [K=1.0000]
Remarks: LAMP: BXRE-30H1000-A-83 Ra: 97
LENS: PM-0132B 36R
DRIVER: RISE DRIVER 350mA
30minutes warm-up

ISOCANDELA DIAGRAM

Test:U:120.22V I:0.1137A P:13.476W PF:0.9842 Freq:59.98Hz Lamp Flux:1339.9x1 lm		
NAME: 2319.201-H3AM-350	TYPE:	WEIGHT:
SPEC.: 3000K	DIM.:	SERIAL No.: 2306050739
MFR.: RISE	SUR.: 0.002826m2	Shielding Angle:

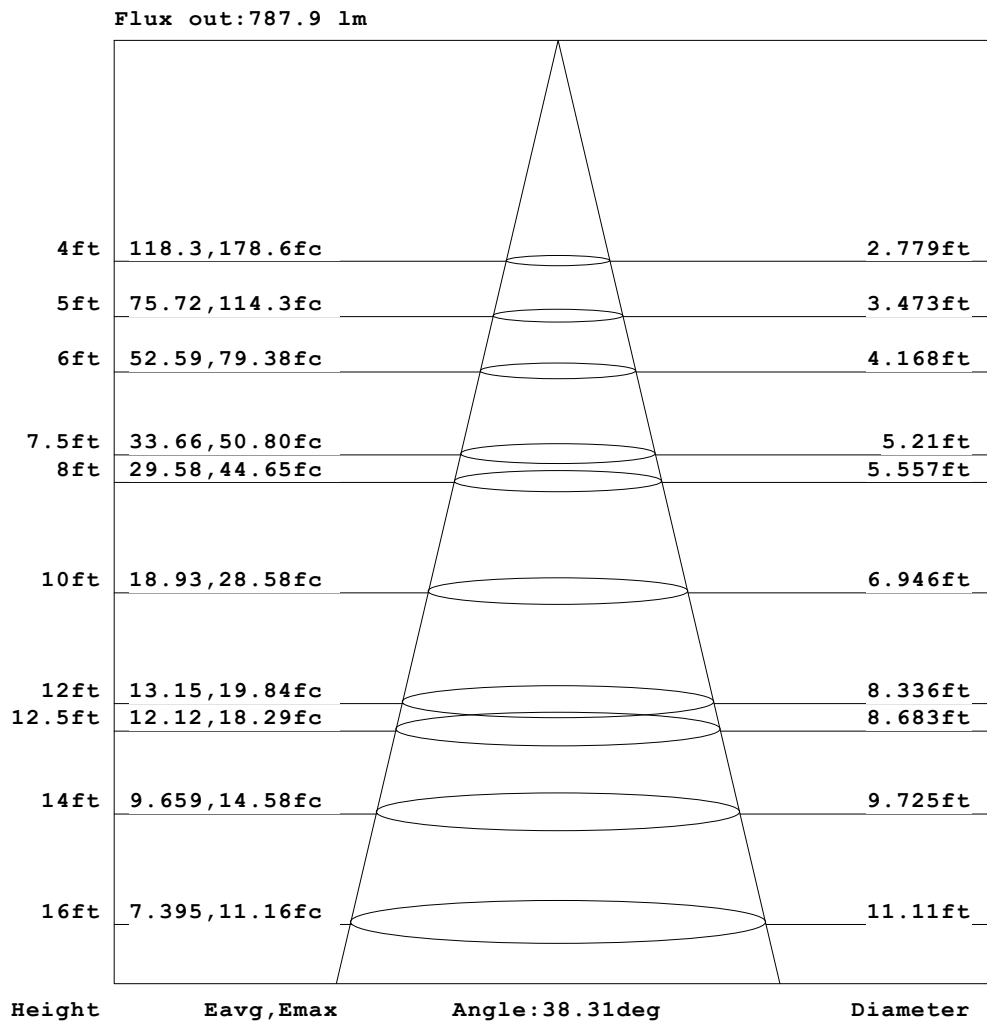


C Range: 0 - 360DEG
C Interval: 30.0DEG
Test Speed: HIGH
Temperature:25.3℃
Operators:zoe
Test Date:2023-6-5

γ Range: 0 - 180DEG
γ Interval: 1.0DEG
Test System:EVERFINE GO-SPEX500_V1 SYSTEM V2.00.461
Humidity:65.0%
Test Distance:3.160m [K=1.0000]
Remarks: LAMP:BXRE-30H1000-A-83 Ra:97
LENS:PM-0132B 36R
DRIVER: RISE DRIVER 350mA
30minutes warm-up

AAI Figure

Test:U:120.22V I:0.1137A P:13.476W PF:0.9842 Freq:59.98Hz Lamp Flux:1339.9x1 lm		
NAME: 2319.201-H3AM-350	TYPE:	WEIGHT:
SPEC.: 3000K	DIM.:	SERIAL No.: 2306050739
MFR.: RISE	SUR.: 0.002826m2	Shielding Angle:



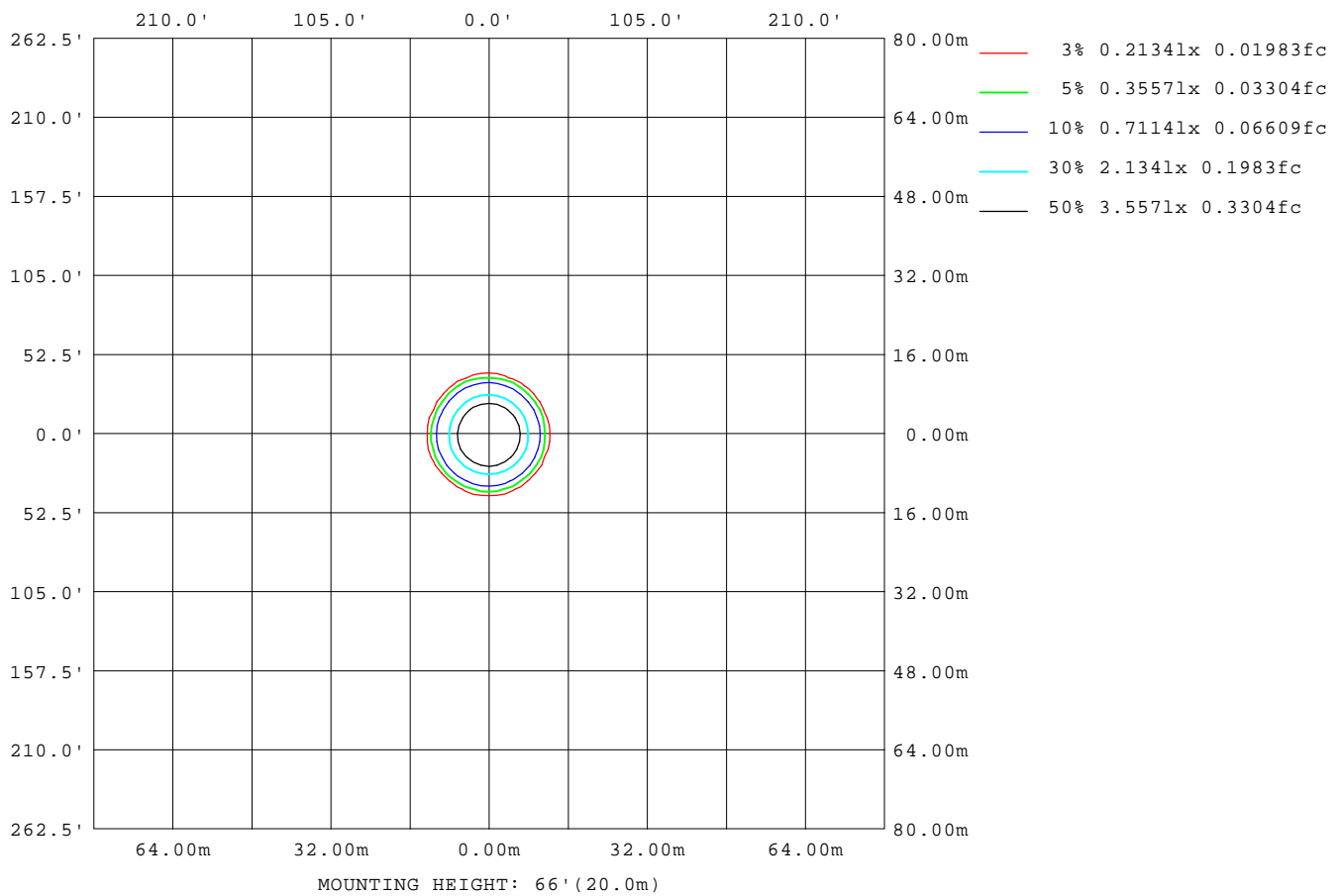
Note: The Curves indicate the illuminated area and the average illumination when the luminaire is at different distance.

C Range: 0 - 360DEG
C Interval: 30.0DEG
Test Speed: HIGH
Temperature: 25.3°C
Operators: zoe
Test Date: 2023-6-5

γ Range: 0 - 180DEG
γ Interval: 1.0DEG
Test System: EVERFINE GO-SPEX500_V1 SYSTEM V2.00.461
Humidity: 65.0%
Test Distance: 3.160m [K=1.0000]
Remarks: LAMP: BXRE-30H1000-A-83 Ra: 97
LENS: PM-0132B 36R
DRIVER: RISE DRIVER 350mA
30minutes warm-up

ISOLUX DIAGRAM

Test:U:120.22V I:0.1137A P:13.476W PF:0.9842 Freq:59.98Hz Lamp Flux:1339.9x1 lm		
NAME: 2319.201-H3AM-350	TYPE:	WEIGHT:
SPEC.: 3000K	DIM.:	SERIAL No.: 2306050739
MFR.: RISE	SUR.: 0.002826m2	Shielding Angle:



C Range: 0 - 360DEG
C Interval: 30.0DEG
Test Speed: HIGH
Temperature: 25.3 °C
Operators: zoe
Test Date: 2023-6-5

γ Range: 0 - 180DEG
γ Interval: 1.0DEG
Test System: EVERFINE GO-SPEX500_V1 SYSTEM V2.00.461
Humidity: 65.0%
Test Distance: 3.160m [K=1.0000]
Remarks: LAMP: BXRE-30H1000-A-83 Ra: 97
LENS: PM-0132B 36R
DRIVER: RISE DRIVER 350mA
30minutes warm-up

LED Avg.L Report

Test:U:120.22V I:0.1137A P:13.476W PF:0.9842 Freq:59.98Hz Lamp Flux:1339.9x1 lm		
NAME: 2319.201-H3AM-350	TYPE:	WEIGHT:
SPEC.: 3000K	DIM.:	SERIAL No.: 2306050739
MFR.: RISE	SUR.: 0.002826m2	Shielding Angle:

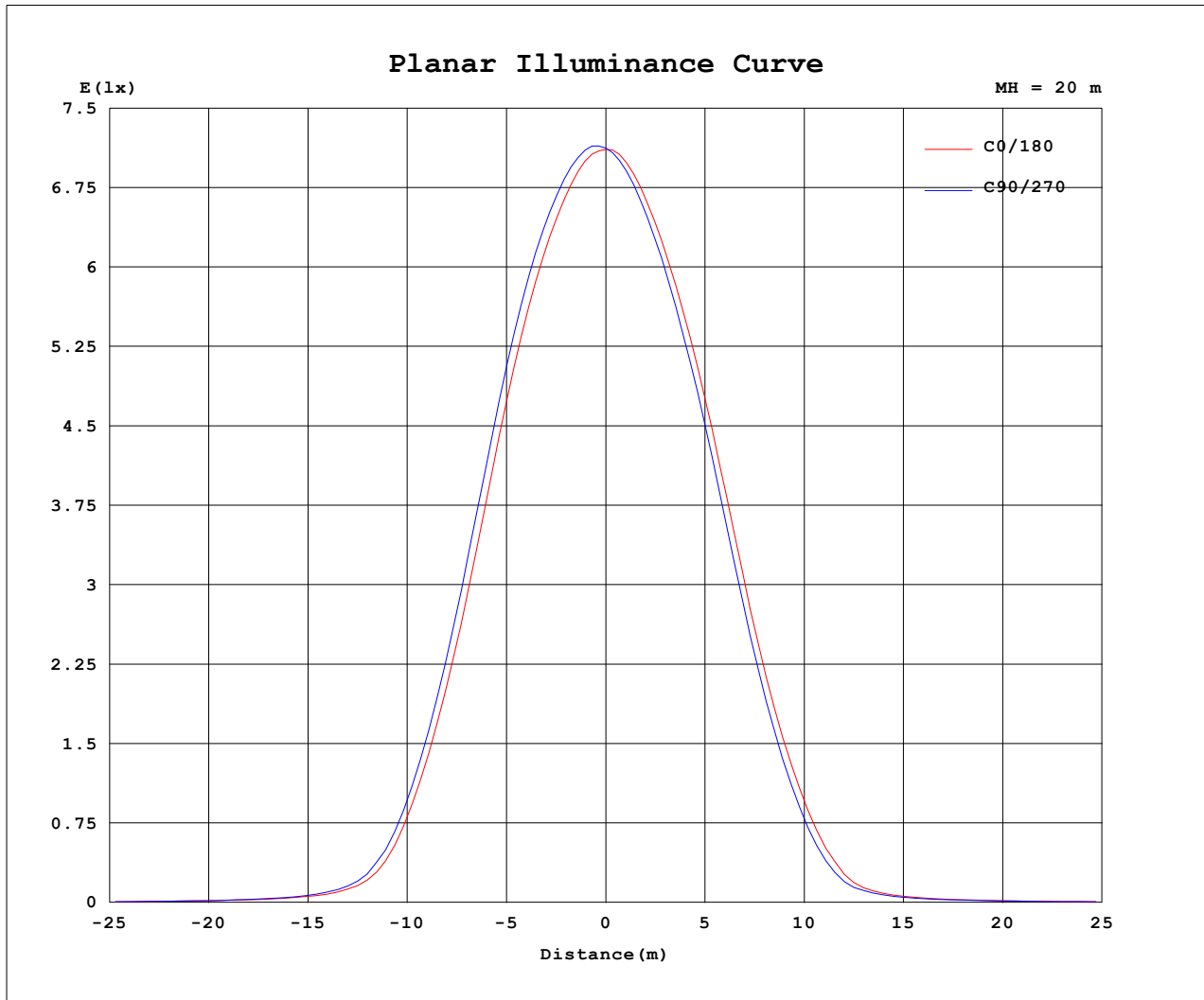
AvgL	cd/m2
L_0~180 (65) av	953
L_0~180 (75) av	216
L_0~180 (85) av	91
L_90~270 (65) av	932
L_90~270 (75) av	185
L_90~270 (85) av	87
L_45 (65) av	951
L_45 (75) av	188
L_45 (85) av	36

Standard: GB/T 29293-2012

C Range: 0 - 360DEG
C Interval: 30.0DEG
Test Speed: HIGH
Temperature:25.3℃
Operators:zoe
Test Date:2023-6-5

γ Range: 0 - 180DEG
γ Interval: 1.0DEG
Test System:EVERFINE GO-SPEX500_V1 SYSTEM V2.00.461
Humidity:65.0%
Test Distance:3.160m [K=1.0000]
Remarks: LAMP:BXRE-30H1000-A-83 Ra:97
LENS:PM-0132B 36R
DRIVER: RISE DRIVER 350mA
30minutes warm-up

Planar Illuminance Curve



C Range: 0 - 360DEG
 C Interval: 30.0DEG
 Test Speed: HIGH
 Temperature: 25.3 °C
 Operators: zoe
 Test Date: 2023-6-5

γ Range: 0 - 180DEG
 γ Interval: 1.0DEG
 Test System: EVERFINE GO-SPEX500_V1 SYSTEM V2.00.461
 Humidity: 65.0%
 Test Distance: 3.160m [K=1.0000]
 Remarks: LAMP: BXRE-30H1000-A-83 Ra: 97
 LENS: PM-0132B 36R
 DRIVER: RISE DRIVER 350mA
 30minutes warm-up

LUMINOUS DISTRIBUTION INTENSITY DATA

Test:U:120.22V I:0.1137A P:13.476W PF:0.9842 Freq:59.98Hz Lamp Flux:1339.9x1 lm		
NAME: 2319.201-H3AM-350	TYPE:	WEIGHT:
SPEC.: 3000K	DIM.:	SERIAL No.: 2306050739
MFR.: RISE	SUR.: 0.002826m2	Shielding Angle:

Table--1

UNIT: cd

C (DEG) γ (DEG)	0	30	60	90	120	150	180	210	240	270	300	330						
0	2848	2848	2848	2848	2848	2848	2848	2848	2848	2848	2848	2848						
5	2746	2779	2801	2810	2798	2779	2737	2704	2692	2683	2694	2714						
10	2458	2523	2559	2570	2548	2513	2442	2392	2375	2355	2372	2410						
15	1959	2040	2086	2105	2092	2063	1985	1920	1900	1865	1869	1904						
20	1273	1356	1390	1421	1417	1419	1338	1279	1263	1216	1205	1229						
25	624	678	703	728	741	753	706	661	647	603	592	596						
30	177	206	213	235	239	248	238	201	209	174	166	168						
35	60.2	66.8	72.1	72.9	71.0	72.9	64.1	58.2	57.0	52.7	53.6	57.4						
40	31.9	34.7	36.3	35.9	34.9	35.4	31.6	29.2	28.2	27.3	28.2	30.1						
45	21.7	22.6	23.0	22.6	22.2	22.0	20.6	18.9	18.5	18.7	19.9	20.8						
50	14.8	15.7	16.2	16.0	15.9	15.7	14.6	13.7	13.3	12.9	13.2	13.9						
55	9.98	10.6	10.9	10.9	11.0	10.9	10.3	9.59	9.32	9.01	9.08	9.35						
60	3.56	3.88	4.03	4.25	4.50	4.59	4.28	3.94	3.74	3.37	3.27	3.28						
65	1.09	1.15	1.11	1.17	1.25	1.24	1.19	1.12	1.11	1.06	1.06	1.04						
70	0.62	0.66	0.64	0.69	0.71	0.72	0.69	0.64	0.64	0.61	0.60	0.59						
75	0.09	0.09	0.10	0.14	0.20	0.21	0.22	0.19	0.16	0.13	0.08	0.08						
80	0.03	0.01	0.02	0.02	0.02	0.02	0.03	0.02	0.01	0.03	0.01	0.01						
85	0.02	0.01	0.01	0.02	0.01	0.01	0.02	0.01	0.01	0.02	0.01	0.01						
90	0.00	0.00	0.00	0.00	0.00	0.00	0.00	0.00	0.00	0.00	0.00	0.00						
95	0.00	0.00	0.00	0.00	0.00	0.00	0.00	0.00	0.00	0.00	0.00	0.00						
100	0.00	0.00	0.00	0.00	0.00	0.00	0.00	0.00	0.00	0.00	0.00	0.00						
105	0.00	0.00	0.00	0.00	0.00	0.00	0.00	0.00	0.00	0.00	0.00	0.00						
110	0.00	0.00	0.00	0.00	0.00	0.00	0.00	0.00	0.00	0.00	0.00	0.00						
115	0.00	0.00	0.00	0.00	0.00	0.00	0.00	0.00	0.00	0.00	0.00	0.00						
120	0.00	0.00	0.00	0.00	0.00	0.00	0.00	0.00	0.00	0.00	0.00	0.00						
125	0.00	0.00	0.00	0.00	0.00	0.00	0.00	0.00	0.00	0.00	0.00	0.00						
130	0.00	0.00	0.00	0.00	0.00	0.00	0.00	0.00	0.00	0.00	0.00	0.00						
135	0.00	0.00	0.00	0.00	0.00	0.00	0.00	0.00	0.00	0.00	0.00	0.00						
140	0.00	0.00	0.00	0.00	0.00	0.00	0.00	0.00	0.00	0.00	0.00	0.00						
145	0.00	0.00	0.00	0.00	0.00	0.00	0.00	0.00	0.00	0.00	0.00	0.00						
150	0.00	0.00	0.00	0.00	0.00	0.00	0.00	0.00	0.00	0.00	0.00	0.00						
155	0.00	0.00	0.00	0.00	0.00	0.00	0.00	0.00	0.00	0.00	0.00	0.00						
160	0.00	0.00	0.00	0.00	0.00	0.00	0.00	0.00	0.00	0.00	0.00	0.00						
165	0.00	0.00	0.00	0.00	0.00	0.00	0.00	0.00	0.00	0.00	0.00	0.00						
170	0.00	0.00	0.00	0.00	0.00	0.00	0.00	0.00	0.00	0.00	0.00	0.00						
175	0.00	0.00	0.00	0.00	0.00	0.00	0.00	0.00	0.00	0.00	0.00	0.00						
180	0.00	0.00	0.00	0.00	0.00	0.00	0.00	0.00	0.00	0.00	0.00	0.00						

C Range: 0 - 360DEG
C Interval: 30.0DEG
Test Speed: HIGH
Temperature:25.3℃
Operators:zoe
Test Date:2023-6-5

γ Range: 0 - 180DEG
γ Interval: 1.0DEG
Test System:EVERFINE GO-SPEX500_V1 SYSTEM V2.00.461
Humidity:65.0%
Test Distance:3.160m [K=1.0000]
Remarks: LAMP:BXRE-30H1000-A-83 Ra:97
LENS:PM-0132B 36R
DRIVER: RISE DRIVER 350mA
30minutes warm-up